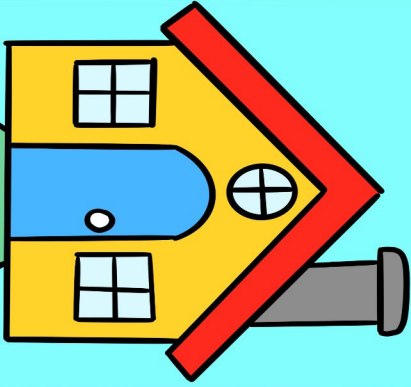
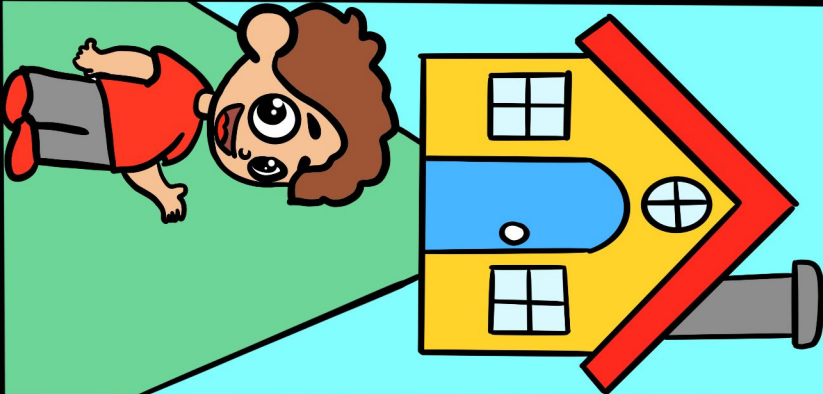


İSMİN HALLERİ

Yalın Hali



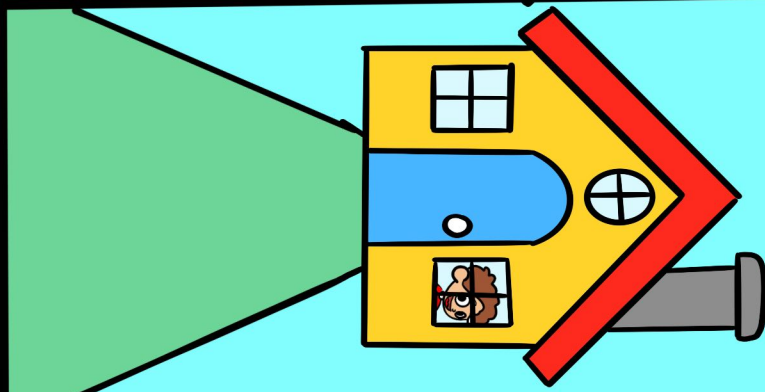
-i Hali



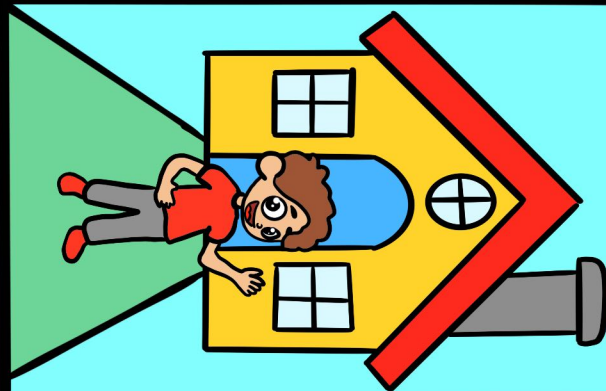
-e Hali



-de Hali



-den Hali



Ev

Hal eki

almamış

Ev-i

Belirtme

Durumu
(-ı,-u,-ü)

Ev-e

Yönelme

Durumu
(-a)

Ev-de

Bulunma

Durumu
(-da,-ta,-te)

Ev-den

Ayrılma

Durumu
(-dan,-tan,-ten)

İSMİN HALLERİ

Yalın Hali



-i Hali



-e Hali



-de Hali



-den Hali



Ev

Hal eki
almamış

Ev-i

Belirtme
Durumu
(-ı,-u,-ü)

Ev-e

Yönelme
Durumu
(-a)

Ev-de

Bulunma
Durumu
(-da,-ta,-te)

Ev-den

Ayrılma
Durumu
(-dan,-tan,-ten)

kitap

defter

silgi

çiçek

deniz

köprü

kapı

masa

Sivas

gazete

dergi

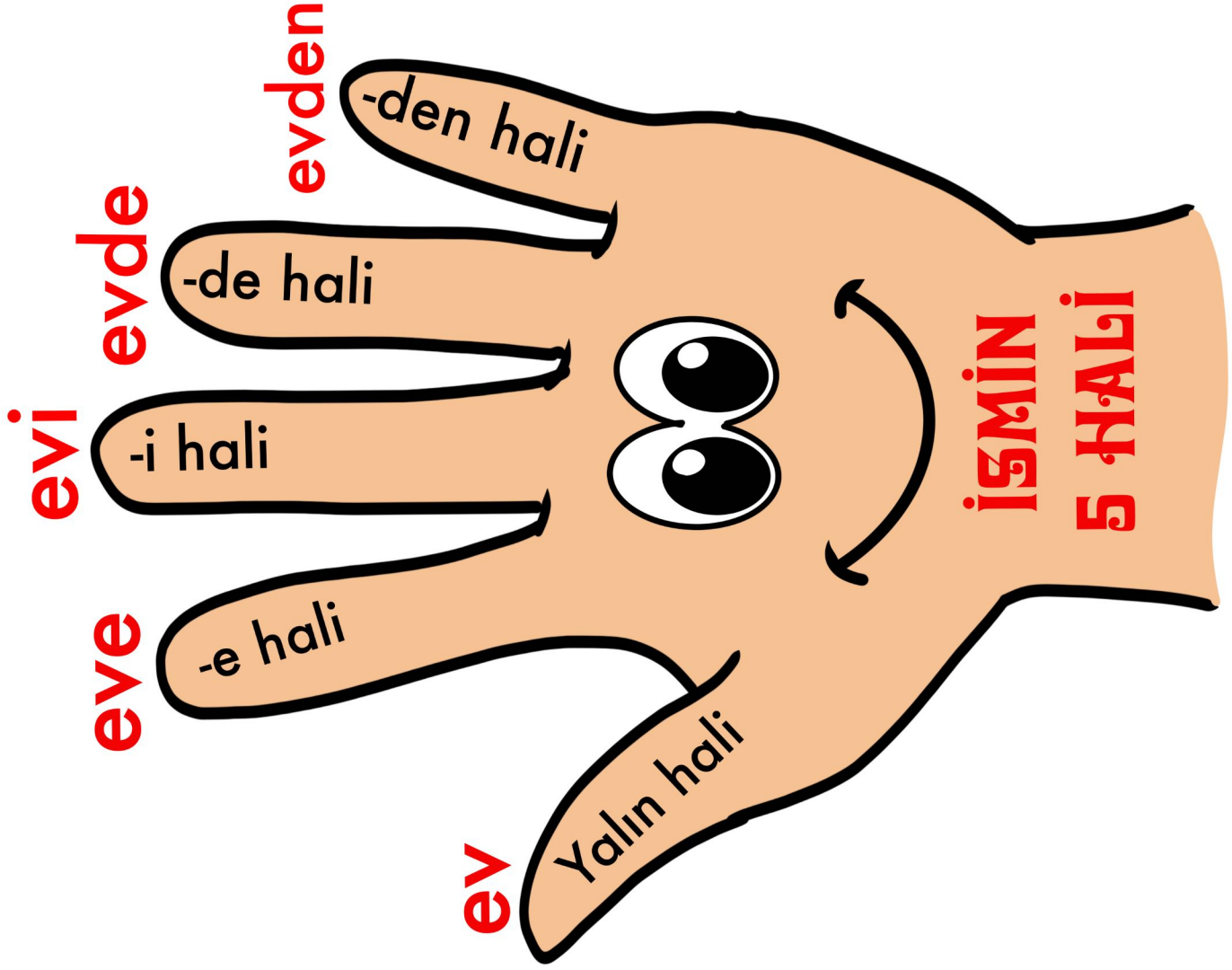
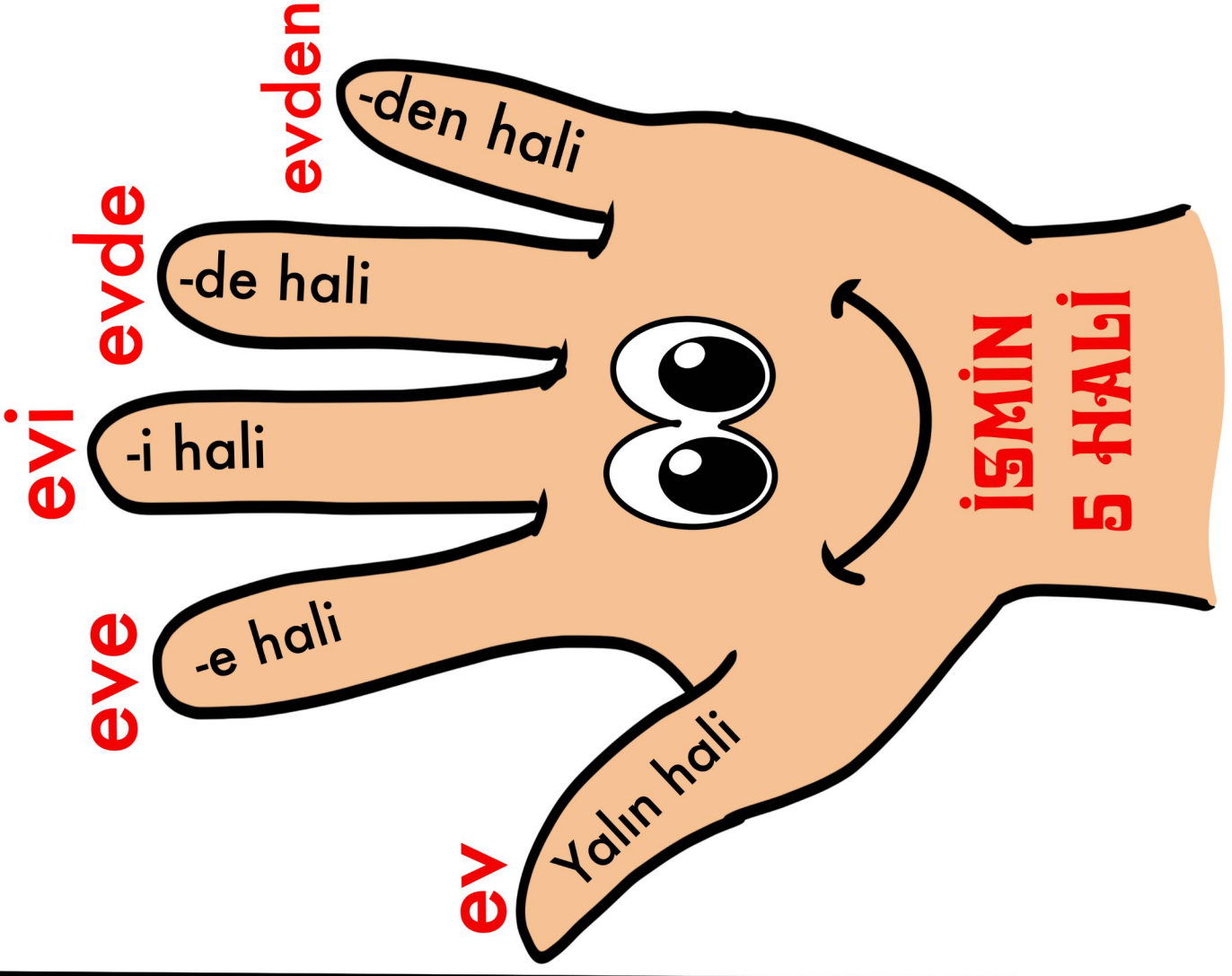
okul

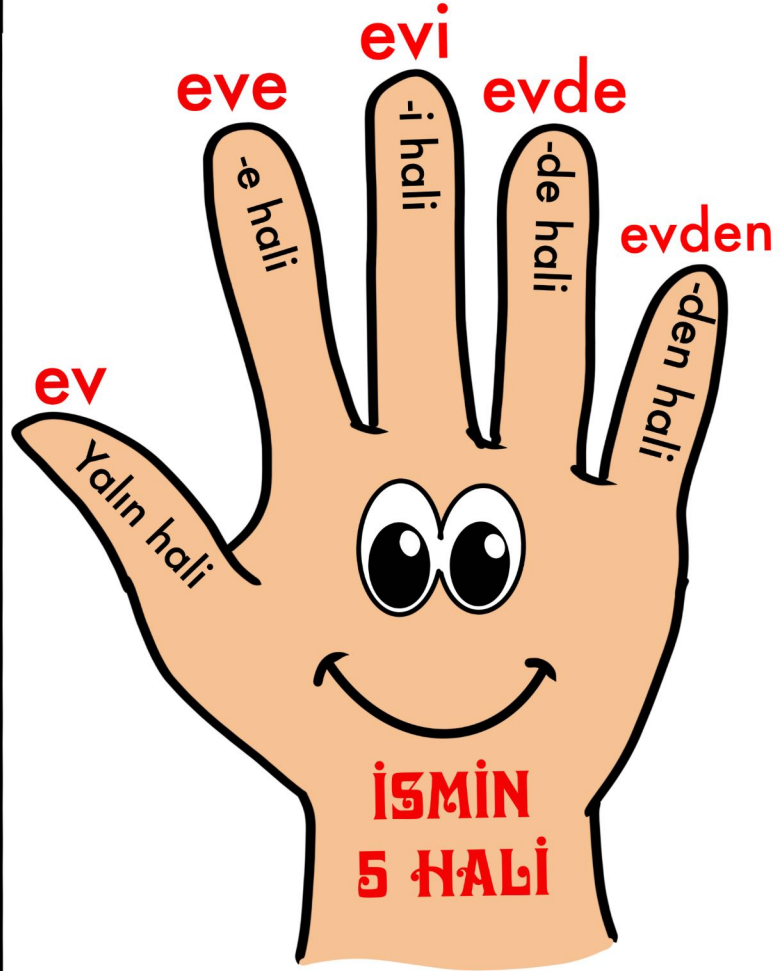
kalem

ders

bahçe

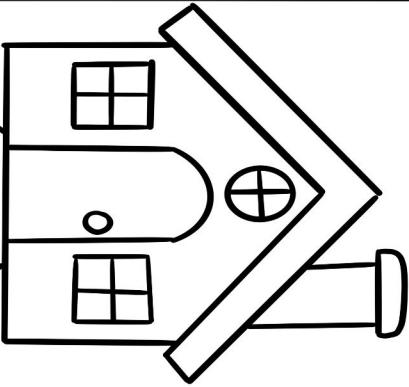




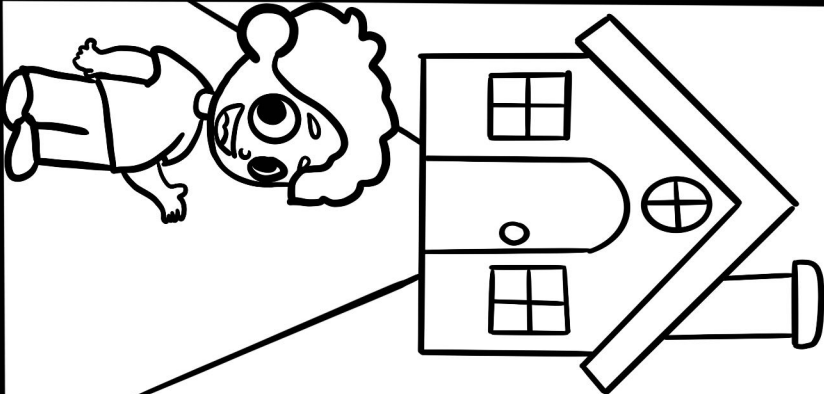


İSMİN HALLERİ

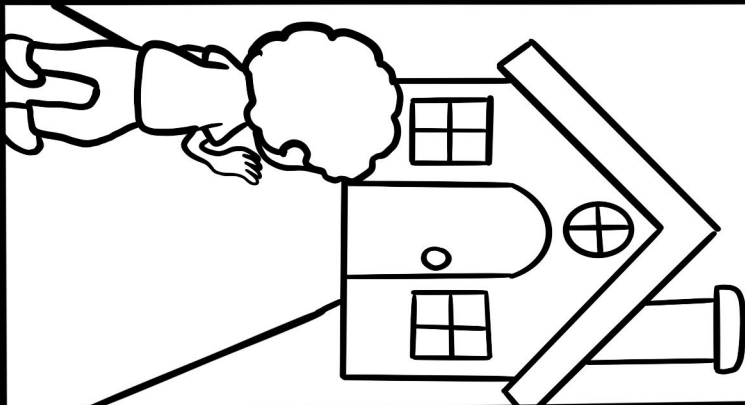
Yalın Hali



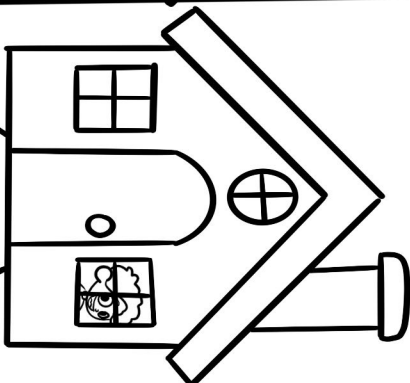
-i Hali



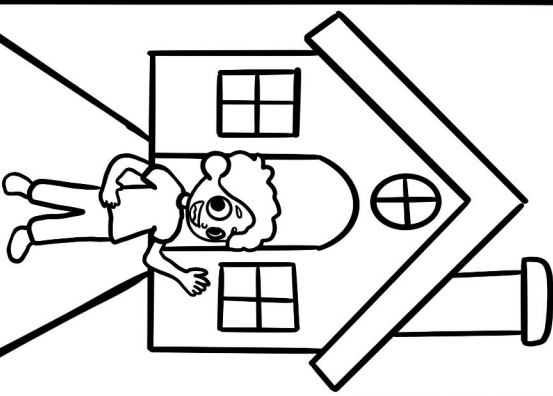
-e Hali



-de Hali



-den Hali



Ev

Hal eki

almamış

Ev-i

Belirtme

Durumu

(-i,-u,-ü)

Ev-e

Yönelme

Durumu

(-a)

Ev-de

Bulunma

Durumu

(-da,-ta,-te)

Ev-den

Ayrılma

Durumu

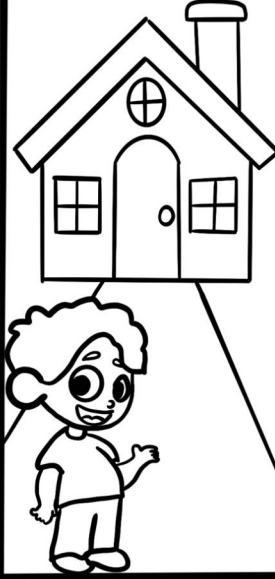
(-dan,-tan,-ten)

İSMİN HALLERİ

Yalın Hali



-i Hali



-e Hali



-de Hali



-den Hali



Ev

**Hal eki
almamış**

Ev-i

**Belirtme
Durumu
(-ı,-u,-ü)**

Ev-e

**Yönelme
Durumu
(-a)**

Ev-de

**Bulunma
Durumu
(-da,-ta,-te)**

Ev-den

**Ayrılma
Durumu
(-dan,-tan,-ten)**

kitap

defter

silgi

çiçek

deniz

köprü

kapı

masa

Sivas

gazete

dergi

okul

kalem

ders

bahçe

